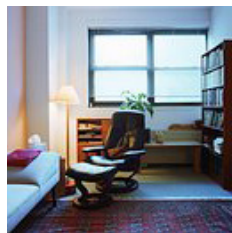
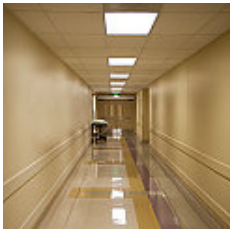


# Whitfield and Brown

## ...Building on our Reputation

### Who are we?

Whitfield and Brown are a North West based building contractor specialising in public and private healthcare settings. With vast experience of working within live, secure and occupied environments we have developed a comprehensive knowledge base that is vital in the smooth running of projects within critical and sensitive areas.



### What do we do?

We undertake building projects between £100,000 – £4 million, past projects have included:

- Operating Theatres
- Ward Refurbishments
- Building Alterations
- Highly serviced areas
- Walk in Centres
- Critical Care Units
- Isolation wards
- DDA Works
- Ward swaps
- GP Surgeries
- Consultation rooms
- Primary Care
- Care Homes
- Secure Units

### How do we do it?

We attribute our continued success in delivering projects in logistically complex environments to:

**Our Experience of working in live hospitals –** We have worked in the healthcare sector for 20 years and have undertaken over 60 hospital projects in the last 5 years alone.

**Our Customer Focus –** We take pride in the level of understanding we have of our clients needs; Subsequently 90% of our turnover is secured via repeat business.

**Client Liaison –** Experience has taught us to approach every project as though it were partnered. We continually liaise with stakeholders to gain a full appreciation of the needs of the patients, staff and visitors and minimise any disruption.

**Effective Quality Management –** We are quality accredited to ISO:9001 and our procedures ensure that our practice reflects our philosophies – right first time, on time, every time.

**Our Calibre of Staff –** We employ local, professional people and have a reliable supply chain. Low staff turnover and long-term supplier relations has meant that the knowledge base gained over our previous healthcare projects has remained within the Whitfield and Brown team.

**Financial Strength –** We have a current Dun & Bradstreet Credit Rating of 1A2 with a Financial Strength scoring of 1A.

**Excellent Health & Safety Record –** Our directly employed Health, Safety and Environmental Manager ensures we run a safe, secure and considerate site without exception.



For enquiries and for more details of our capabilities, please contact: **Nigel Biggs**, Managing Director. Whitfield & Brown, Halton House, Gorse Lane, Widnes, Cheshire WA8 0RP tel: **0151 420 1000** email: **nigel\_biggs@whitfieldbrown.com** or visit: **www.whitfieldbrown.com**